



KINTRONIC LABS

an ISO 9001 registered company

STL* Band Isocouplers

Designed to yield Broadband Isolation of an STL Dish Transmission Line across the base of a "hot" AM tower*



FMC-0.2P Isocoupler with included mounting brackets and standoff insulators

Features

- Comes with complete installation details
- Can be post-mounted or mounted directly on the tower leg using the mounting hardware supplied with the isocoupler.

Specifications: Model FMC-0.2P/0.2P-S*

Frequency Range:	935-970 MHz
Bandwidth:	30 MHz
VSWR:	< 1.1:1
Insertion Loss:	< 0.95 dB
Power Rating:	200 Watts
AM Peak Voltage Rating:	12 kV
Impedance:	50 Ohms In and Out
Capacitance:	< 25 pF
Connector Type:	N Female; N Male; 7/16 DIN
Weight:	10 lbs.
Dimensions:	4" OD and 18" Overall Length
*FMC-0.2P-S is the 0.2P with customized band pass, such as ISM Band, 902-928 MHz	

*STL: Studio-Transmitter Link



KINTRONIC LABS

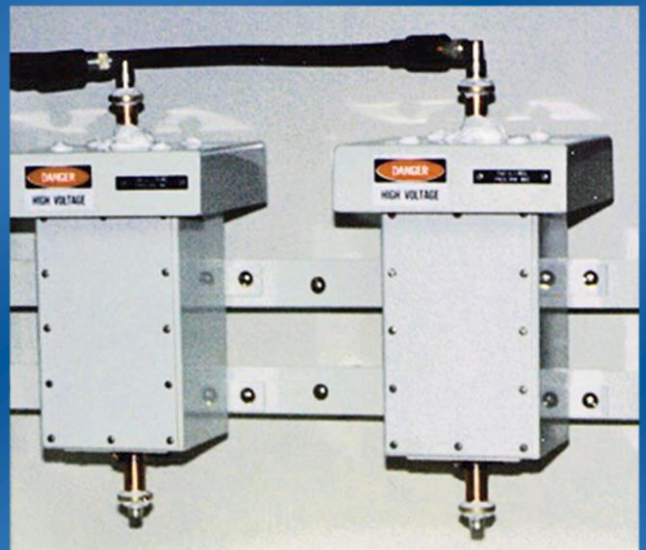
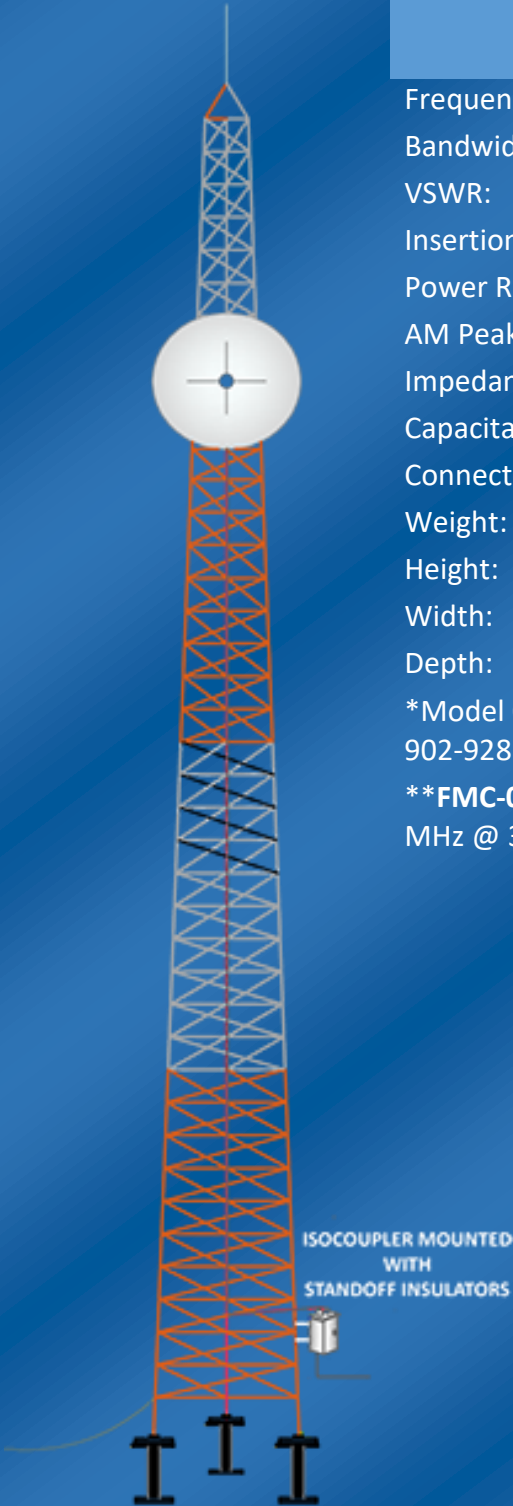
an ISO 9001 registered company

Specifications Model FMC-0.1 and FMC-0.1S*

Frequency Range:	935-970 MHz**
Bandwidth:	30 MHz
VSWR:	< 1.1:1
Insertion Loss:	< 0.8 dB
Power Rating:	100 Watts
AM Peak Voltage Rating:	12 kV
Impedance:	50 Ohms In and Out
Capacitance:	< 50 pF
Connector Type:	N Female; N Male; 7/16 DIN; 7/8 EIA
Weight:	14 lbs.
Height:	18"
Width:	8"
Depth:	8"

*Model 0.1S is with customized band pass, such as ISM Band, 902-928 MHz

****FMC-0.1X** operates in 860-920 MHz range @ 200W or 920-957 MHz @ 300W



Note: Photo shows (2) FMC-0.1 STL Isocouplers, Installed