

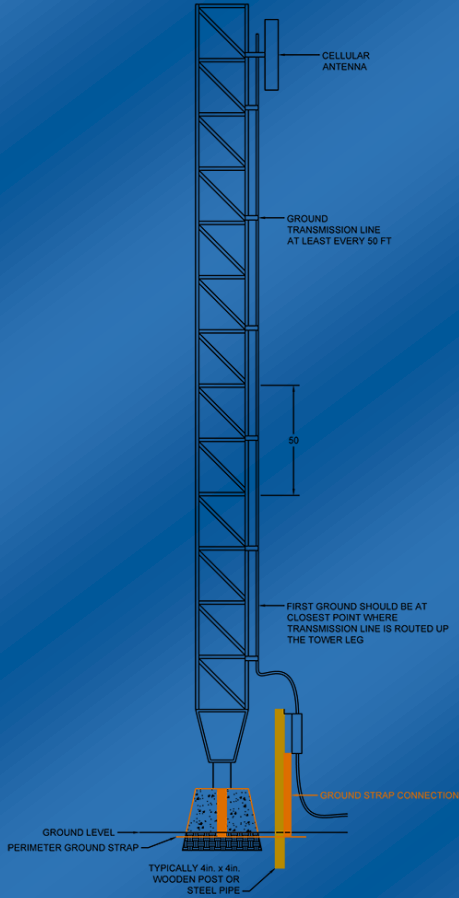


KINTRONIC LABS

an ISO 9001 registered company

Microwave Isocouplers

For wireless antenna applications on AM broadcast towers



Standard Post Mounting



Isocoupler Installation

For PCS Digital Cellphone Model FMC-1.9G-PCS

Band of Operation: 1.85 – 2.05 GHz

VSWR: <1.6

Insertion Loss: <1.5dB

RF Voltage Rating: >30KV Peak

Impedance: 50 Ohms in and out

Capacitance: 40 pF

*One isocoupler required per each transmit/receive antenna

For Wireless Internet or other spread spectrum applications

Model FMC-2.4G-SS

Band of Operation: 2.4 – 2.5 GHz

VSWR: <1.3:1

Insertion Loss: <2 dB

RF Voltage Rating: >30KV Peak

Impedance: 50 Ohms in and out

Capacitance: 40 pF

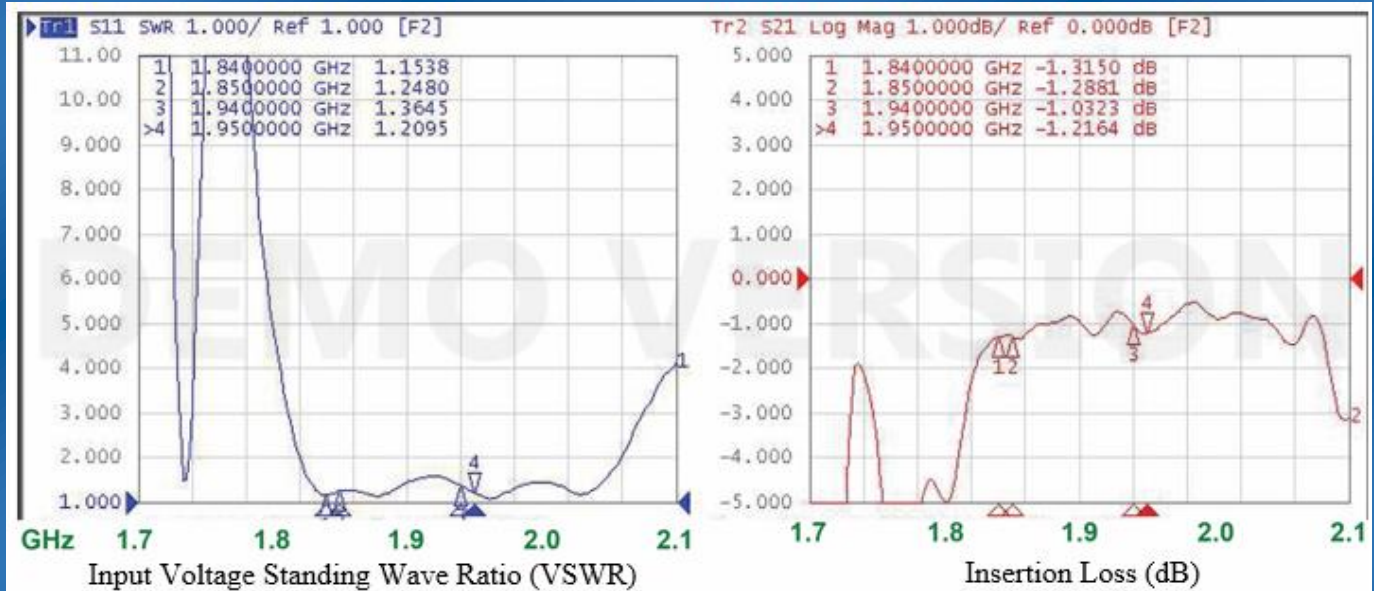
*Optional tower leg mounting kits are available



KINTRONIC LABS

an ISO 9001 registered company

Typical Microwave Isocouplers Pass Band Characteristics



Additional Microwave Isocoupler Features

- Physical Characteristics
 - Length: 40.25"
 - Diameter: 12.75"
 - Weight: 60 Lbs
- Supplied complete with installation instruction
- Input and Output Connectors: 7/16" DIN
- Mounting Provisions
 - Tower leg mount
 - Separate post mount
- Weatherproof for outdoor installation

