



KINTRONIC LABS

an ISO 9001 registered company

STL* Band Isocouplers

Broadband performance at a low price!

**Designed to
yield Broadband
Isolation of an
STL* Dish
Transmission
Line across the
base of a “hot”
AM tower**



FMC-0.2 Isocoupler with included mounting brackets and standoff insulators

*STL: Studio-Transmitter Link

Features

- Type N Female connectors in and out
- Comes with complete installation details
- Can be post-mounted or mounted directly on the tower leg mounting hardware supplied in accordance with the tower leg design

Specifications: Model FMC-0.2P

Center Frequency:	950 MHz standard (800-960 MHz available)
Bandwidth:	30 MHz
VSWR:	<1.1:1
Insertion Loss:	<0.95 dB
Power Rating:	200 Watts
AM Peak Voltage Rating:	10KV
Impedance:	50 Ohms In and Out
Capacitance:	<65 pf
Weight:	10 lbs.
Dimensions:	4" OD and 18" Overall Length



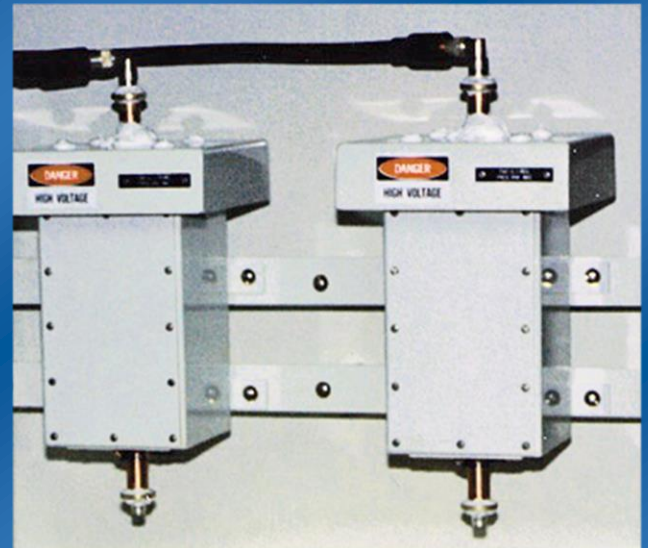
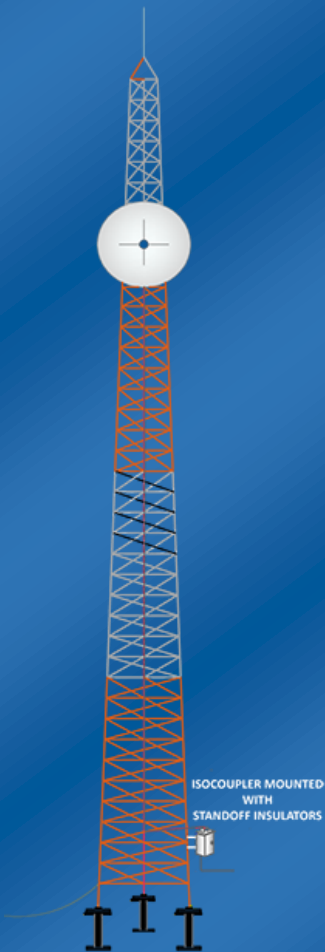
KINTRONIC LABS

an ISO 9001 registered company

Specifications Model FMC-0.1 and FMC-0.1X

Center Frequency:	700-975 MHz
Bandwidth:	6 MHz*
VSWR:	<1.05:1
Insertion Loss:	<0.8 db
Power Rating:	100 Watts*
AM Peak Voltage Rating:	18KV
Impedance:	50 Ohms In and Out
Capacitance:	<100 pf
Weight:	10 lbs.
Height:	18"
Width:	8"
Depth:	8"

*Model 0.1X available to 300 Watts with reduced bandwidth



FMC-0.1 and 0.1X STL Isocouplers, Installed