



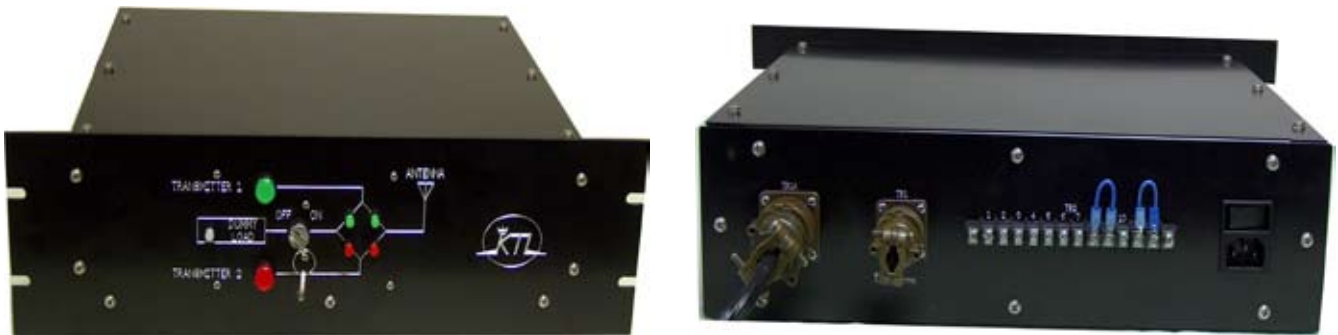
KINTRONIC LABORATORIES, INC.

MODEL KTL-RMC-1L/R

AM/ FM/TV

MAIN/STANDBY

TRANSMITTER CONTROLLER



STANDARD FEATURES

- Utilizes Programmable Logic Controller (PLC) With Relay Logic Emulation
- Versatile Electrical Interface To Accommodate Direct AC Drive or Low Voltage DC Drive of Any Type of Open Frame or Coaxial Switch
- Front Panel Illuminated Pushbutton Selection
- Remote Control Interface
- Key Operated XMTR Interlock Bypass For Operation Into Dummy Load
- Failsafe Logic Utilizing Transmitter RF Mute To Prevent Switch Movement with RF Applied
- Adjustable Duration Switching Window for Solenoid Protection and To Permit Operation of Any Type of RF Switch
- Electrical Interface Provisions on Rear:
 - (1) 14-Pin Quick Disconnect For RF Contactor;
 - (2) 7-Pin Quick Disconnect For Remote control;
 - (3) 12-Pin Barrier Strip For XMTR RF Mute, Antenna Safely Interlock & Dummy Load Air Interlock
- Dimension: 19" (483mm) W x 13.75" (349mm) D x 5.25" (133mm) H

KINTRONIC LABORATOIRES, INC.
P.O. BOX 845, Bristol, TN 37621-0845

Email: ktl@kintronic.com

Phone: 423-878-3141

Fax: 423-878-4224

Web: www.kintronic.com