



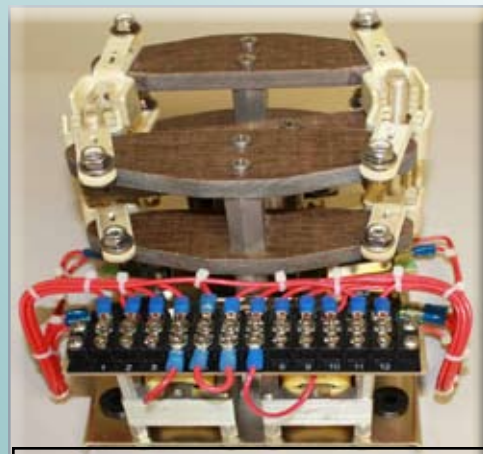
KINTRONIC LABORATORIES, INC.

RF CONTACTOR SERIES

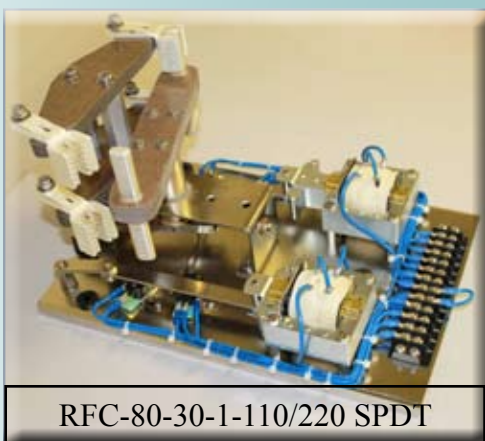


RFC-40-20-1-110/220 SPDT

- Dimension: 8" (20.30 cm) L x 6.5" (16.5cm) W x 6.5" (16.5 cm) H
- Current Rating: 40 Amps Max
- Voltage Rating: 20 KV Peak Max (0-1km ASL)

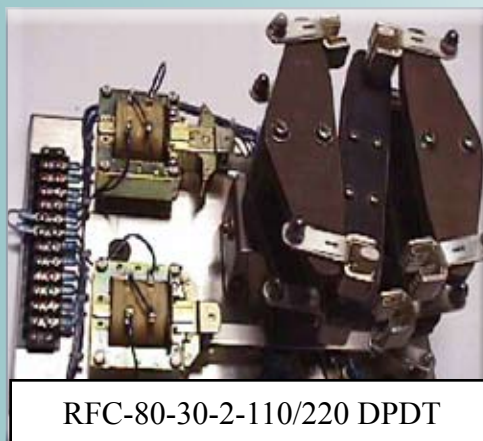


RFC-40-20-2-110/220 DPDT



RFC-80-30-1-110/220 SPDT

- Dimension: 13" (33 cm) L x 9" (22.9cm) W x 7" (17.8 cm) H
- Current Rating: 80 Amps Max
- Voltage Rating: 30 KV Peak Max (0-1km.ASL)



RFC-80-30-2-110/220 DPDT

APPLICATIONS

- Main/Standby AM/Medium Wave Transmitter or Antenna Transfer Switches
- AM/Medium Wave Directional Antenna Pattern Switches
- AM/Medium Wave Transmitter Combiner Switches
- AC Transformer Tap Switches
- LF/VLF Transmitter or Antenna Transfer Switches

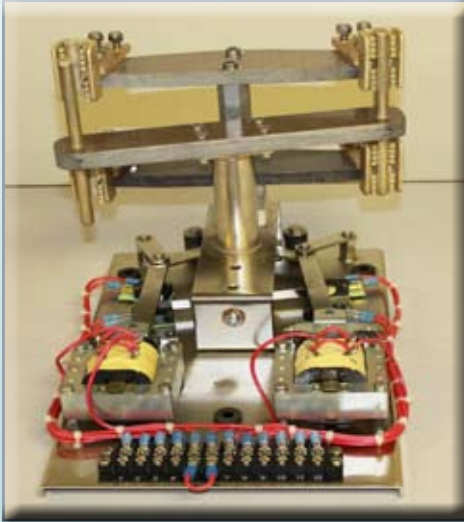
CONFIGURATION OPTIONS

- Single Pole, Double Throw (SPDT)
- Double Pole, Double Throw (DPDT)

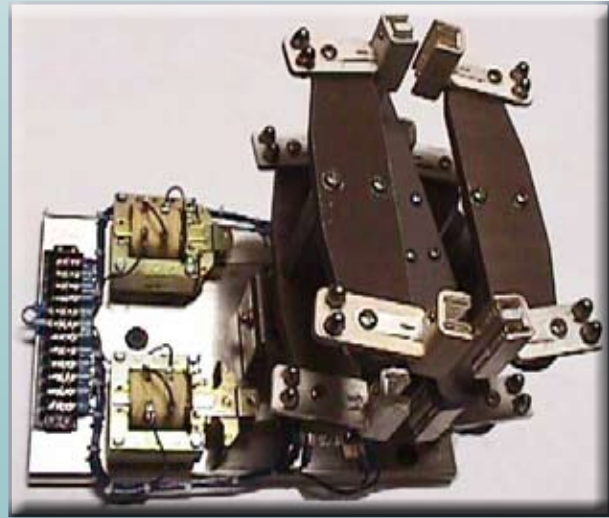
COMMON FEATURES

- Frequency Range: 0-5MHZ
- AC Power Requires: 110/220 AC, 50-60HZ, 4/8 Amps Inrush
- Switching Time: Less Than One Second
- Inline Microswitches for Solenoid Protection
- Dual Position Status Microswitches
- Mechanically Latching
- Electrical Interface Via Terminal Barrier Strip
- Complete Line of Spare Parts Available for Immediate Delivery
- All RF Contacts and Contact Holders Are Silverplated Copper and Require a Boltdown RF Buss Interconnection
- Peak Voltage Rating Decreases Approximately 10% For Every 1.5km Increase in Altitude Above Sea Level
- Optional: 24VDC Low Voltage Slave Relay Drive Boards (Specify Part No. SRP-26NORH2B Ground Pulse or SRP-24VOCRH2B 24 VDC Pulse)

RF CONTACTOR SERIES

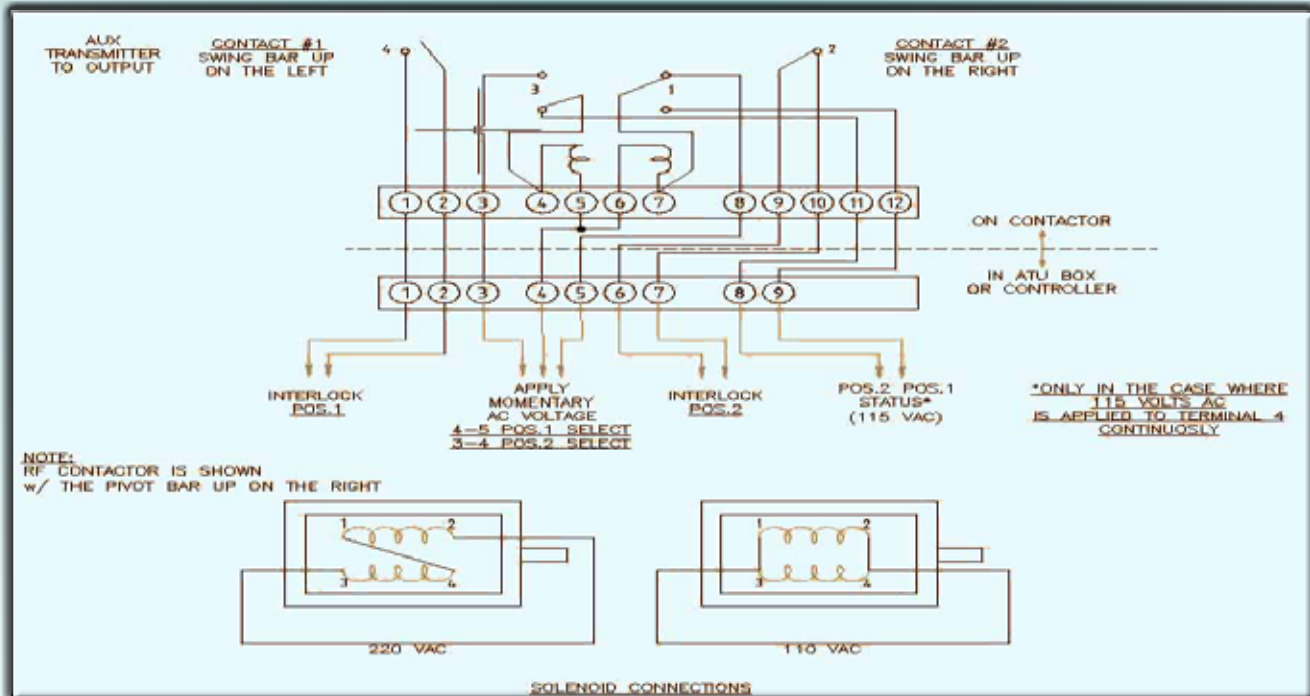


RFC-100-35-1-110/220 SPDT



RFC-100-35-2-110/220 DPDT

- Dimensions: 14.5" (36.8 cm) L x 10.5" (26.7 cm) W x 10.5" (26.7 cm)H
- Current Rating: 100 Amps Max
- Peak Voltage Rating: 35 KV Max (0-1km ASL)



Note: Solenoid Operating Voltage is Field Changeable Between 110 VAC and 220 VAC for the RFC-40-20, RFC-80-30 and RFC-100-35 Contactor Series As Per the Wiring Diagram Shown Above. The Voltage Tolerance is +5%/-10% for 50 or 60 HZ.

PH: 1-423-878-3141
FAX: 1-423-878-4224

KINTRONIC LABORATORIES, INC.
P.O. BOX 845, BRISTOL, TN 37621

www.kintronic.com
ktl@kintronic.com