

**LIGHTNING EXPERTS**

## **Passive Point Discharge System --Passive Static Dissipation--**

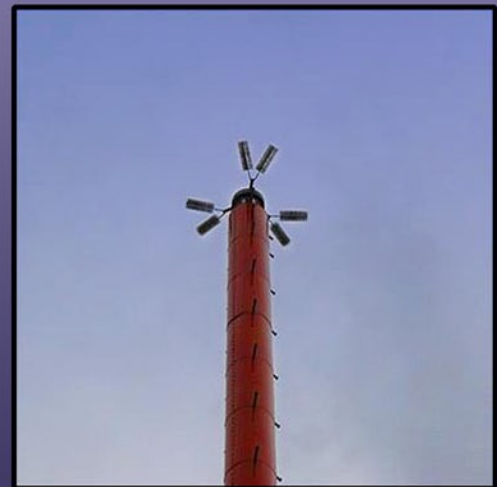


**Single Units Leg Mount-3 Elements**  
Each Element Weighs Approximately. 3.0 Pounds



**Double Units**  
**6 Elements**

Each Unit Weighs  
Approximately. 6.0 Pounds



Kintronic Labs Inc. is proud to carry Lightning Experts' quality products for lightning and static protection. These systems have been extremely successful on structures located in all types of terrain and climates.



Each **Passive-Point Discharge element** contains up to 12,000 stainless steel points, which are arranged in such a manner to produce maximum ionization. The central twisted core of the unit is also made of stainless steel. The mounting bracket is fabricated and galvanized and each unit is hand-finished and inspected. A special lacquering process is employed which is unique to these units. This process assists in further protecting the unit from effects of the environment.

Three elements mounted on one site will exceed 36,000 points; this is more than adequate for the ionization necessary to eliminate static and assist in dissipating the effects of lightning. Quantity, size and placement of elements varies with the structure's height, geometry and appurtenances. Each system is configured for your application. The constant action of the system, albeit passive, insures that the area of ionization protection is far larger than the size of the elements themselves. Wind associated with most rapidly moving storm cells sets the points in motion, further enhancing their efficacy in producing ionization. Some users report an eerie glow surrounding the elements during storm activity. That's just a visual indication that the dissipation devices are doing their job!

This **Passive-Point Discharge system** is also unique in the angular mounting method and the linear, weather-resistant design, which insures that ice and snow do not accumulate on the units.

Lightning Experts **Passive-Point Discharge system** is designed to give virtually zero-wind-load effect by design and withstand tremendous wind velocity and all other forces of nature.

**Elements are all stainless steel construction** and are warranted against defects in workmanship. Effectiveness is not diminished by a poor ground system.

**Easy installation** - single elements or clusters are attached to a tower or rooftop with supplied brackets. Installation is a one-person operation - no rigging required.

Give Kintronic Labs a call today--let's discuss your application, the type of structure, and previous lightning history. We will be pleased to quote a configured system for your consideration or budgetary planning.