



# KINTRONIC LABS



*A global leader in the rollout of **DRM-capable** medium wave antenna systems*



**DESIGN • MANUFACTURE OF FEEDER SYSTEMS & ACCESSORIES • SYSTEM INTEGRATION  
INSTALLATION • COMMISSIONING**

**Bringing Broadcast and Wireless Solutions to the World**

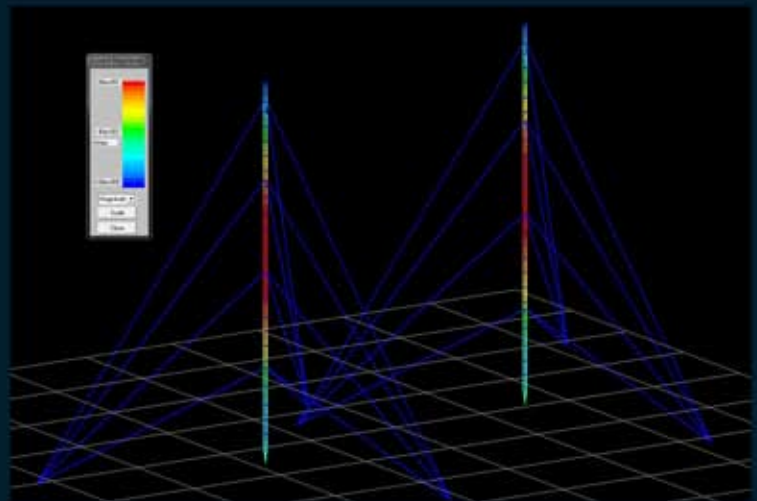
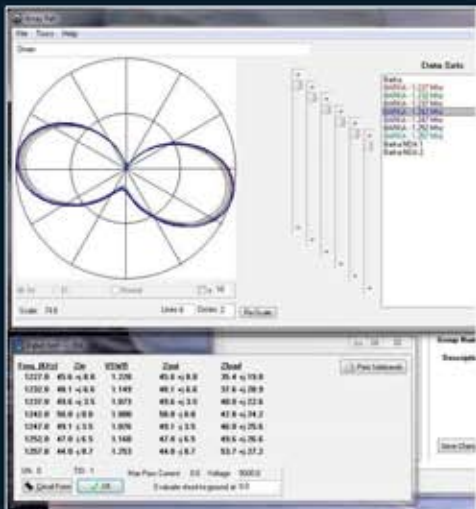
[www.kintronic.com](http://www.kintronic.com) [ktl@kintronic.com](mailto:ktl@kintronic.com)

# DRM-Capable Systems Installed



*Kintronic DRM-Capable Systems have been installed in India, Bangladesh, Oman, Saudi Arabia, and South Africa.*

## Designs Optimized for DRM



KTL has developed our in house CKTNET and ARRAYPAT software programs for the explicit purpose of the impedance bandwidth and pattern bandwidth design optimization of any type of Medium Wave (MW) antenna system utilizing analog or single- or dual-channel Digital Radio Mondiale (DRM) or similar modulation.

This design capability is essential to be able to meet the demanding wide bandwidth requirements of today's digital modulation technologies. The engineering team at KTL have the capability of modeling any type of MW tower feed configuration or array configuration for non-directional or directional single-frequency or multiple frequency operation.

# Manufacture of Feeder Systems & Accessories



KTL has grown as a company over the past sixty years to meet the growing custom radio frequency (RF) requirements of the worldwide broadcast industry from prototype to completed and tested hardware solutions. Utilizing nothing but the highest quality materials and manufacturing processes, KTL has become a recognized leader in the supply of the following broadcast transmission products worldwide:

***RF Feeder Systems***  
***Custom Skirt Kits***  
***Ground System Materials***

***Control & Monitoring Systems***  
***Pre Fabricated Buildings***

## System Integration



From sight planning to the supply of all hardware components for a radio broadcast facility, the KTL team has been supplying custom RF system hardware and services to a multitude of customers on six continents worldwide for over sixty years. From **towers** to complex feeder systems to **transmission lines** and custom on site or pre fabricated tuning houses or transmitter buildings, KTL can supply all of the required hardware and services to put your radio station on air.

# Installation



KTL provides site supervision services utilizing highly experienced personnel to coordinate the wide array of tasks required to complete a complex radio broadcast transmission facility. KTL can provide a complete array of services in a timely and efficient manner to put your station on the air.

***RF Feeder System Networks***

***Tower & Ground System***

***Transmission Line Installation (via trenches or covered trough)***

***Site Control & Monitoring System***

# Commissioning



Following installation of the radio broadcast facility, KTL can mobilize highly trained and experienced field engineers to conduct the final commissioning tasks to put the station on the air. Utilizing the latest in electronic instrumentation and software tools, the KTL commissioning engineers can provide the final quality control checks, system adjustments, and tests to assure long-term reliable performance in conformance with the original specifications for the station.