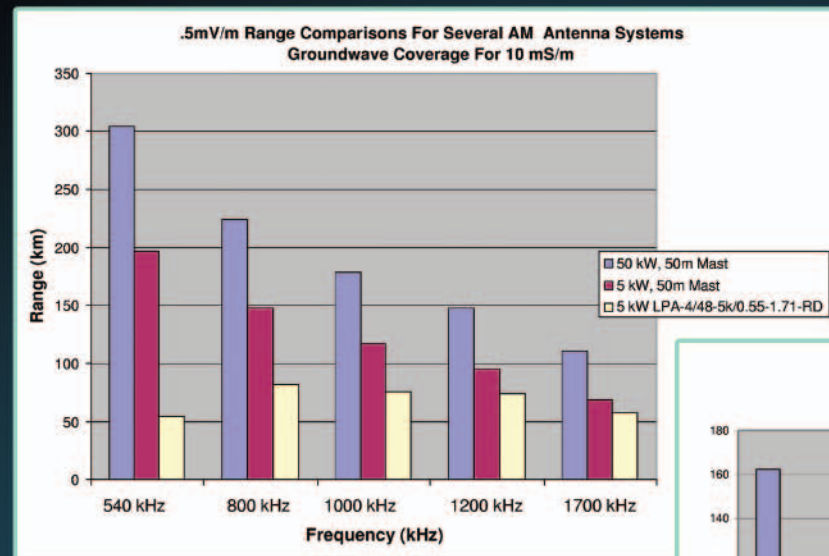


RANGE COMPARISON LAND-BASED MOBILE SYSTEMS

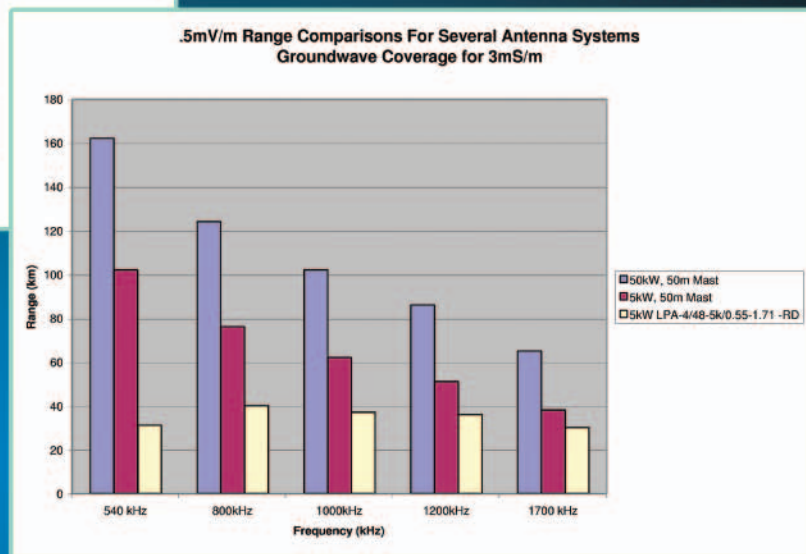


Ground
Conductivity:
10ms/m or 3ms/m

3ms/m (dry soil)

10ms/m (moist soil)

MOBILE SYSTEM COMPARATIVE FEATURES



KINTRONIC LABS, INC.

AM/MEDIUM WAVE MOBILE BROADCAST ANTENNA SYSTEMS



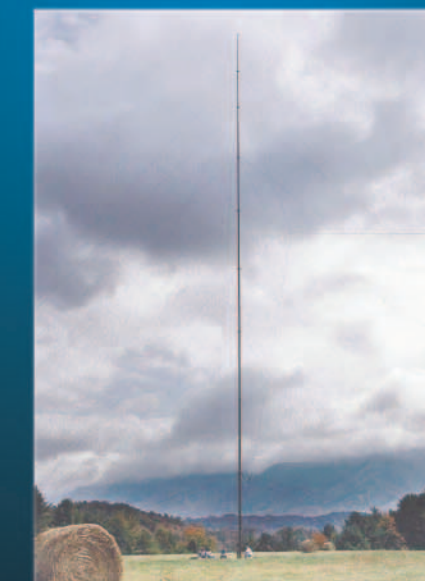
LAND-BASED MULTIPLEXED



LAND-BASED
ALL-BAND
SHORT RANGE



SHIPBOARD
ALL-BAND



LAND-BASED ALL-BAND LONG RANGE

SPECIFICATION	LAND-BASED MULTIPLEXED	SHIPBOARD ALL-BAND	LAND-BASED SHORT RANGE	LAND-BASED LONG RANGE
Transmitter Power:	1-50kw	1-5kw	1-5kw	1-50kw
Frequency Range (MHz)	Customer-specified	0.53-1.64	0.55-1.71	0.53-1.71
Mast Type:	Lattice, Sectionalized	Loaded Whip	Tubular, Sectionalized	Composite Crank-up
Antenna Height:	52M	10.7M	15M	50M
Deployment Time	2 days, 4-man crew	1 Hour, 2-man crew	6 Hours, 4-man crew	6 Hours, 4-man crew
Integrated Configuration:	Dual-Axle Trailers	Case-mounted on Ship Deck	Humvee Shelters	2.5 ton Truck

144 Pleasant Grove Road
Bluff City, TN 37618
www.kintronic.com



Phone: (423) 878-3141
Fax: (423) 878-4224
Email: ktl@kintronic.com

Kintronic Labs offers complete concept to field tested mobile antenna systems built to the customer's specific requirements.

LAND-BASED MULTIPLEXED MOBILE SYSTEM

(MODEL MBA-RNM-2/3/4-1/5/10/25/50kw)



RF matching and Filter Unit on Dual-Axle Trailers



Transportable Lattice Mast Trailer



Mast Base Plate (No Concrete Required)



Quick Erect Aluminum Sectionalized Supports



Four-Section Weatherproof ATU



Quick Erect Guy Tensioning Devices

GENERAL FEATURES

- Configured on trailers for highway transport utilizing commercial four-wheel-drive vehicles
- Rugged, sectionalized aluminum weatherproof Antenna Tuning Unit (ATU)
- ATU pre-tune Calibration Chart
- Requires Tower Rigging Crew
- Requires no concrete

LAND-BASED ALL-BAND SHORT-RANGE MOBILE SYSTEM

(MODEL LPA-4/48-5k/0.55-1.71-RD)

GENERAL FEATURES

- Utilizes Qty. 4 aluminum, sectionalized quick erect masts supplied in olive drab canvas bags (Note: erection kit included)
- Antenna kit and ground system supplied in olive drab bags
- ATU supplied in four-section integrated configuration
- ATU pre-tune calibration chart
- Requires no concrete

SHIPBOARD ALL-BAND MOBILE SYSTEM

(MODEL VAL-5k/0.53-1.64)



Case Mounted on Ship Deck



Fully Deployed

GENERAL FEATURES

- Sectionalized mast in fiberglass case
- Ruggedized, sectionalized aluminum weatherproof Antenna Tuning Unit (ATU) permanently installed on ship deck
- ATU pre-tune calibration chart

LAND-BASED ALL-BAND LONG RANGE MOBILE SYSTEM

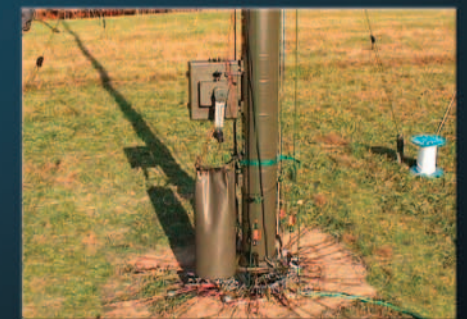
(MODEL MSA-50m-5/10/50k-AB)



Quick Erect Crank-up Composite Mast



5kW Antenna Tuning Unit (Available for transmitter power rating of 1, 5, 10 or 50 kW)



Base View of Mast

GENERAL FEATURES

- Composite, crank-up mast with base plate, all quick erect guy materials, anchors, ground system materials for quick deployment, battery-powered motor and truck mount brackets
- Ruggedized weatherproof ATU
- ATU pre-tune calibration chart
- Requires no concrete