

RF LINEAR DRIVE CONTACTORS FOR HIGH POWER AM/MW APPLICATIONS

PRIMARY FEATURES:

- No Shock Or Vibration
- High Mean Time Between Failure
- Actuator Driver Board Includes Contactor Position Selection Switches
- Switching Time Less Than Or Equal To One Second
- Dry Closures For Position Sensing
- Simplicity In Design & Required Maintenance
- Operational Voltage: 110-240VAC, 50-60Hz

RF CONTACTOR REPLACEMENT PARTS

RFC-61	Finger Contact Holder For RFC 150L-55
RFC-80	Finger Contact Holder For RFC-200L-30
RFC-206	Finger Contact Holder For RFC-200L-80
RFC-03P	Spring Finger Contact
RFC-75P	Spring Finger Contact For RFC-150L (2 required per contact)
RFC-66	Side Insulator Bar For RFC-150L-55
RFC-68	Moveable Bar For RFC...150L-55
RFC-69	Contact Bar For RFC-150L-55
RFC-82	Side Insulator Bar For RFC-200L-30
RFC-83	Moveable Insulator Bar For RFC-200L-30
RFC-203	Moveable Bar For RFC-200L-80
RFC-207	Contact Bar For RFC-200L-80
S24-09A04-04	Actuator Linear 24V For RFC-150L and RFC-200L
HHSMITH91116	Rubber Mounting Grommet (RFC-26)
RFC-37	#1 Microswitch Assembly (RFC-150L, RFC-200L)
RFC-38	#2 Microswitch Assembly (RFC-200L-30)
RFC-39	#3 Microswitch Assembly (RFC-150L,RSC-200L)
RFC-40	#4 Microswitch Assembly (RFC-200L-30)
RFC-150-55-CK	DPST Conversion Kit For RFC-150-55-1
RFC-200-30-CK	DPDT Conversion Kit For RFC-200-30-1
RFC-200-80-CK	DPST Conversion Kit For RFC-200-80
SRP-3WP	Linear Actuator Driver Board
MKS-75-24	Power Supply 110-240Vac to 24Vdc 2 amp
RFC-ACSP	Contactor Driver Assembly,including Power Supply

PH: 1-423-878-3141
FAX: 1-423-878-4224

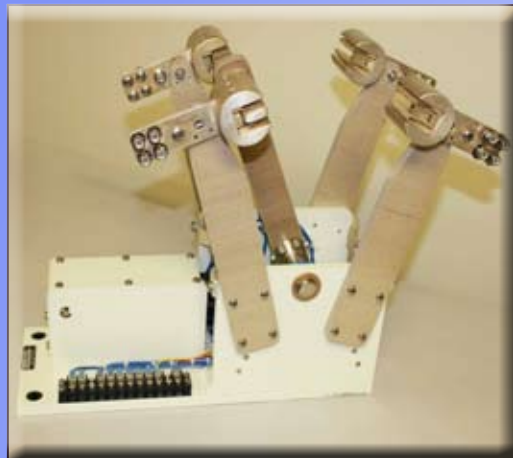
KINTRONIC LABORATORIES, INC.
P.O. BOX 845, BRISTOL, TN 37621

www.kintronic.com
ktl@kintronic.com

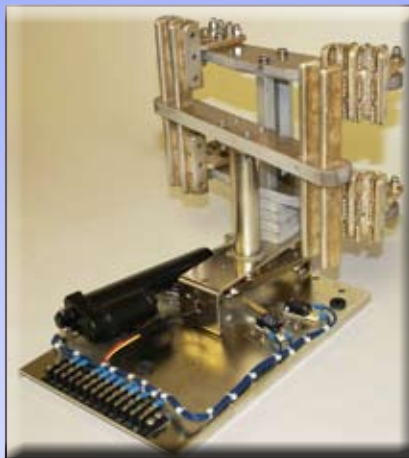


KINTRONIC LABORATORIES, INC.

RF LINEAR DRIVE CONTACTORS FOR HIGH POWER AM/MW APPLICATIONS



MODEL RFC-150I-55-1-110/220 SINGLE POLE DOUBLE THROW 150 AMP, 55KV
DIMENSIONS: 20" L x 14.75" H x 10" W



MODEL RFC-200L-30-1-110/220 SINGLE POLE DOUBLE THROW 200 AMP, 30KV
DIMENSIONS: 14.25" L x 12.75" H x 12" W



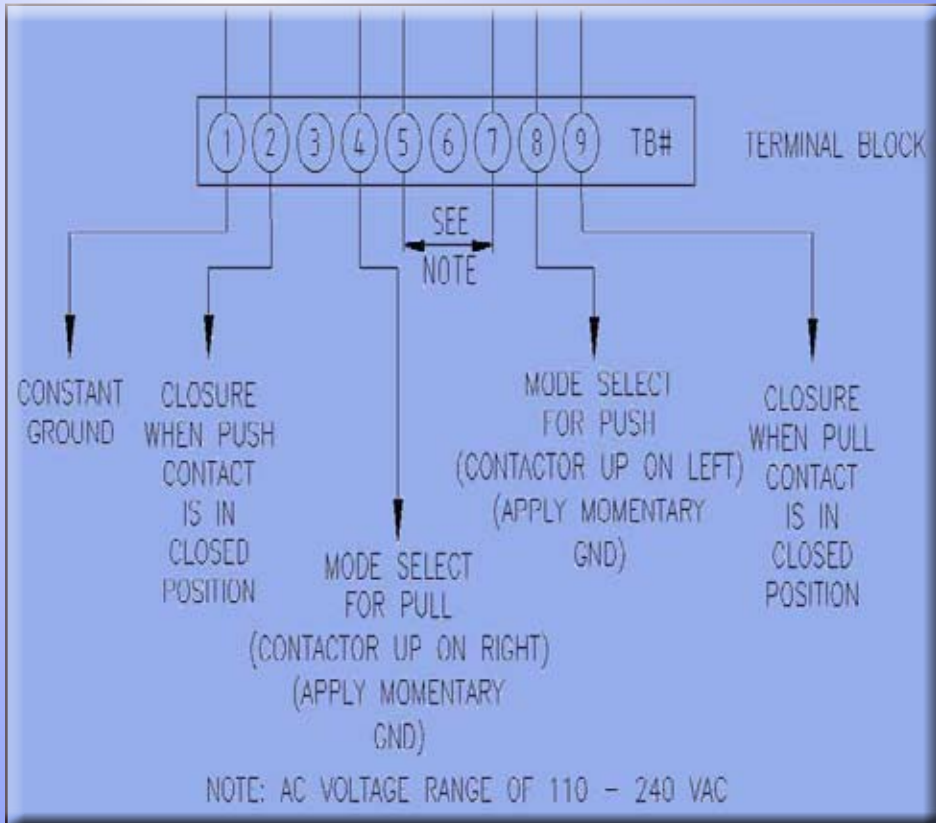
MODEL RFC-200L-55-1-110/220 SINGLE POLE DOUBLE THROW 200 AMP, 80KV
DIMENSIONS: 25" L x 24" H x 17.5" W



PART NO. RFC-ACSP CONTACTOR DRIVER ASSEMBLY



PART NO. MKS-75-24 POWER SUPPLY 110-240 Vac TO 24



CONTACTOR ELECTRICAL INTERFACE DIAGRAM