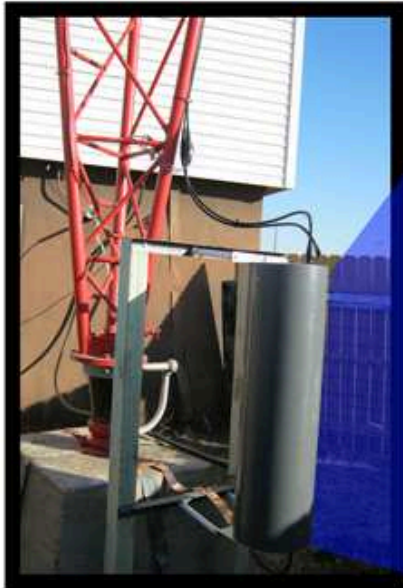


LOW POWER ALL PURPOSE ISOCOIL

"GREAT FOR LPFM TRANSLATORS!"

MODEL# ISO-170-FM



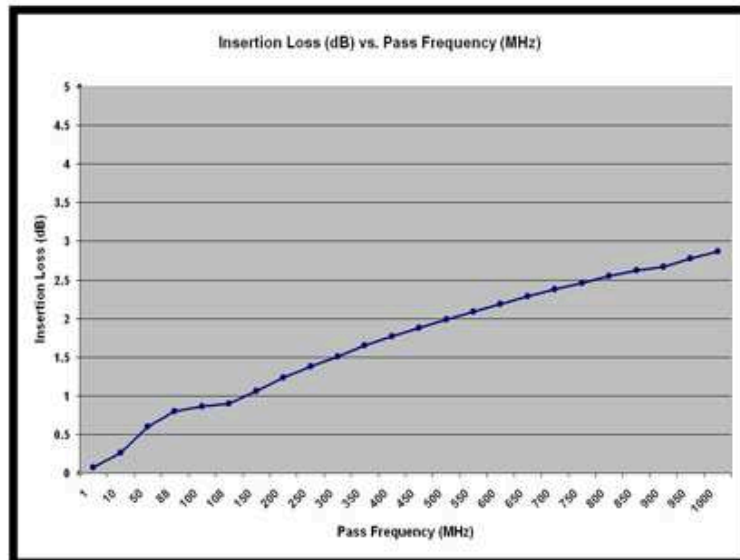
THE ISO-170-FM IS A HIGH INDUCTANCE ISOCOIL THAT IS PRIMARILY DIRECTED TOWARD FM TRANSLATOR INSTALLATIONS ON "HOT" BASE INSULATED AM TOWERS. THE UNIT CAN ALSO BE USED FOR ANY APPLICATION THAT CAN TOLERATE THE INSERTION LOSS SHOWN BELOW IN THE 1 - 1000 MHZ FREQUENCY RANGE.

THE HIGH INDUCTANCE ASSOCIATED WITH THIS ISO-COIL DESIGN AS SHOWN BELOW RESULTS IN MINIMAL IMPACT ON THE BASE DRIVE IMPEDANCE OF THE HOST AM TOWER.

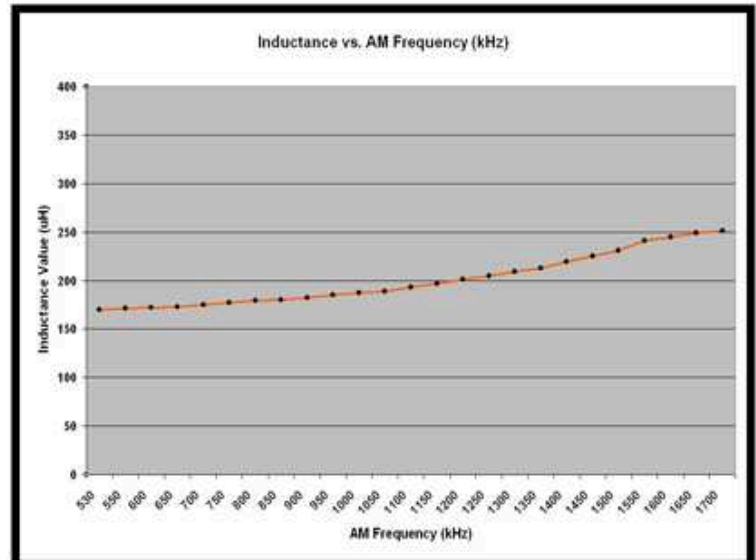
THE ISO-170-FM UTILIZES TYPE N (ISO-170-FM-N) OR 7/6 DIN (ISO-170-FM-DIN) CONNECTORS.

THE ISO-170-FM COMES WITH QTY. 4 8" LONG INSULATORS (PART# ISO-170-MK) TO FACILITATE MOUNTING IN THE VICINITY OF THE TOWER BASE ON A PAIR OF VERTICAL UPRIGHTS.

THE UNIT IS 40" LONG AND WEIGHS 63 POUNDS.



INSERTION LOSS vs. PASS FREQUENCY



INDUCTANCE vs. AM FREQUENCY

KINTRONIC LABS INC.

PHONE: 423.878.3141

WWW.KINTRONIC.COM

FAX: 423.878.4224

BLUFF CITY, TENNESSEE U.S.A

